

Aptean EAM

# Avoid Downtime and Improve Productivity

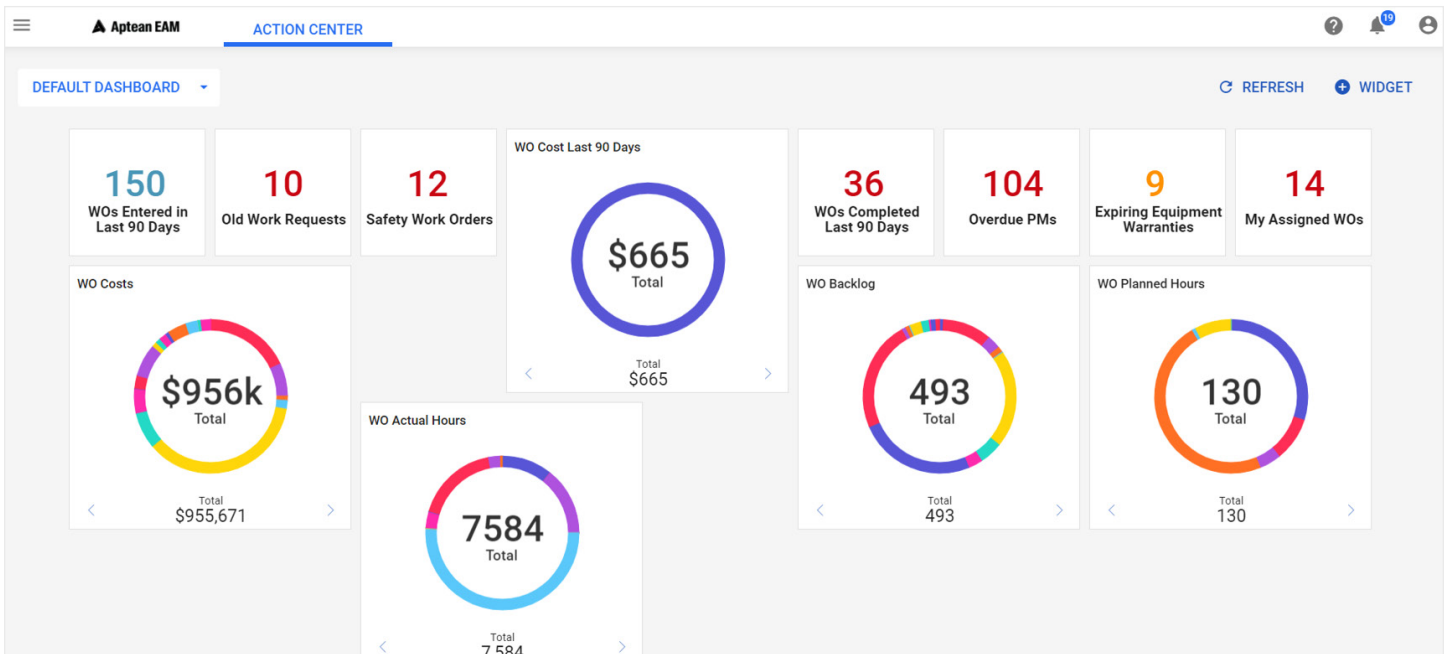


A well-oiled maintenance program is essential in maintaining the health of your production operations. Without one, unexpected downtime from equipment failure can lead to costly repairs and missed sales. By investing in an EAM solution, you will be able to regain control of your maintenance, have the data needed to make strategic asset decisions and improve the effectiveness of your maintenance team - all to ensure that your equipment is healthy and performing at peak levels.

Aptean EAM is design specifically for manufacturing maintenance professionals to provide you with the right features you need to get the job done without slowing you down. Whether you need a CMMS or an EAM solution, Aptean EAM allows you to take action ahead of any potential downtime and provides real-time visibility of your maintenance operations. Pinpoint your problem areas to fix them before they get worse and avoid additional costs. Our solution is mobile, easy-to use and configurable allowing for quicker adoption and eliminating the need for costly customizations.

## Benefits

- » Improve the profitability of your production lines by preventing unplanned downtime and efficiently manage your maintenance program
- » Gain visibility to maintenance data, allowing you to make smarter and faster decisions
- » Grows with your business so you have the tools you need now and tomorrow
- » Access everything you need from anywhere - from equipment manuals on the shop floor to KPI reports from your home office.



## Boost asset performance with smart dashboards and a streamlined user experience that works for you.

Aptean EAM provides deep asset management functionality to meet the needs of manufacturers - all packaged in a modern, easy to use solution. Powerful analytics coupled with configurable dashboards and standard reports will give you real-time visibility into asset health and maintenance performance - allowing you to make critical decisions quickly and confidently.

- › **Bring Your Data to Life** – Make confident, data-driven decisions faster by accessing key operational information, wherever and whenever you need it.
- › **Streamlined Experience** – A new modern interface with intuitive workflows that help increase efficiency and reduce time to on board. Delivered configurations and easy-to-use templates for faster implementations.
- › **Visibility and Control** – Provides real-time visibility of maintenance operations while controlling access to data and work processes for staff at each site to make sure only authorized users are making updates.
- › **Stay Ahead of the Curve** – Cloud-based software so you can stay updated with the latest features and best practices.
- › **Global Accessibility** – The solution supports multiple languages, multiple regions, across multiple sites. Users can translate information from multiple languages to maintain visibility across all of your locations.



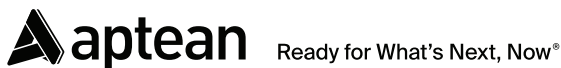
## Key Features

- › **Versatility to Meet Your Needs** – Whether you require a CMMS or an EAM solution, the platform is scalable and offers flexibility with a range of features to grow with your maintenance operations.
- › **Simplify Processes** – Provides management visibility and operation execution for either a single site, or across multiple sites and warehouses, by channeling information for analysis and reporting.
- › **Enable Preventive Maintenance** – Reduce downtime by keeping machines running optimally and reliably.
- › **Improved Inventory Control** – Optimizes your MRO inventory by ensuring the right parts are available and get to the right place at the right time, reducing your overhead costs.
- › **Track Repairable Parts** – Repairable spares parts can be managed through both internal work orders and external repairs - providing visibility and status of the repair order.
- › **MRO Procurement** – Manage purchase from procure to pay - issue request for quotes (RFQ), automate purchase requisitions (PR) and generate purchase orders (PO) and Blanket POs.
- › **Increase Technician Efficiency** – Enables mobile work orders, automatic email alerts and review/ approve requests all through smartphones or tablets.
- › **Audit and Regulatory Compliance** – Streamline regulatory and compliance audits by having all of your asset data and work order history in one, easy to access place. Perform inspections regularly to capture data, maintain assets and extend machine life.
- › **Efficient Resource Management** – Track staff and contractor data to assign the right work tasks to the right people at the right time, minimizing unplanned downtime and improving efficiency.
- › **Decisions Anytime Anywhere** – Send automatic email alerts when review or approval is needed to keep things moving. Maintenance work requests can be sent real-time through a tablet or smartphone.
- › **Document Compatibility** – Multiple document types such as such as PDF, Word, Excel and others can be linked and printed with your work orders.

# Are You Ready to Learn More?

Want to learn more about Aptean EAM?

Contact Us at [info@aptean.com](mailto:info@aptean.com) or visit [www.aptean.com](http://www.aptean.com).



## About Aptean

Aptean is one of the world's leading providers of purpose-built, industry-specific software that helps manufacturers and distributors effectively run and grow their businesses. With both cloud and on-premise deployment options, Aptean's products, services and unmatched expertise help businesses of all sizes to be Ready for What's Next, Now®. Aptean is headquartered in Alpharetta, Georgia and has offices in North America, Europe and Asia-Pacific.

To learn more about Aptean and the markets we serve, visit [www.aptean.com](http://www.aptean.com).